



MMI CONFERENCE

Measurements & Metering Innovation

“METERING FOR A RESOURCE CONSTRAINED WORLD”

CROWN
PROMENADE
HOTEL
LEVEL 1
8 WHITEMAN ST
MELBOURNE
AUSTRALIA

25-27 MAY 2009



Conference Program



EXHIBITORS



OVERVIEW

CHAIRMAN'S MESSAGE

MMI is Australia's premier metering event attracting metering manufacturing and meter services companies, leading metering managers, technologists, consultants, regulators, policy makers and many others interested in metering and the issues associated in metering. In 2008 some 280 delegates, speakers and guests attended the event in Sydney.



Climate Change, Water Conservation and Water Demand Management, Energy Efficiency and Demand Side Response occupies more and more of our thinking as a community and as individuals. Therefore it comes as no surprise that this year's event focuses on "Metering for a Resource Constrained World". Indeed the Advanced Metering Infrastructure (AMI) projects (Victorian and National) are seen as sustainability initiatives and we look forward to learning of their progress. Other areas of interest included in this year's program are in metering technologies and strategies for improved water asset management, metering's role necessary to achieve pragmatic Demand Management targets, new metering technologies and techniques and lots, lots more.

As always you will see something new in our program; this year the Water Panel Session on the Wednesday morning is a hands-on demonstration session where delegates can get close and personal with water metering technologies. Our Electricity Panel session (which is on at the same time) is also going to be a little different. This year we are focussing on regulations and how regulatory outcomes affect customers and (eventually) metering. We are also very pleased to see Michael Peevey, the Californian Regulator and Bruce Foster, Senior VP with Southern California Edison back again and they will participate in the Regulatory Panel Session.

We look forward to seeing you in Melbourne.

MICHAEL ZAMMIT
CHAIRMAN, MMI CONFERENCE

ABSTRACT OVERVIEW



RICK STEVENS

Director, Strategy Development, Hydro One, Canada

"Hydro One Smart Meter/Smart Grid Project"

Hydro One, a wire's company in the province of Ontario has been installing smart meters since the end of 2007 and now has well over 750,000 installed across its 640,000 square kilometre service territory. Early on, they realised the need for ubiquitous communications and integration of data and devices to enterprise applications had benefits well beyond traditional AMI.

In 2005, before Smart Grid was fashionable, the team explored the use open protocol/standards based communications such as Zigbee (IEEE 802.15.4) and WiMax (IEEE 802.16) components of their two-way high bandwidth network solution. It layered on in a proof of concept, applications like automated reclosers, remote terminal units, conservations and demand management devices and mobile IT. With the benefits proven Hydro One is now moving forward with its Smart Grid initiative and will outline the steps coming next.



SHAUN COX

Managing Director, South East Water

"Climate of Change"

The water industry is seeing a paradigm shift. Increasing demand with finite resources means delivering innovative and sustainable customer solutions. In his presentation, Shaun Cox will look at the approaches taken by South East Water in understanding customer needs and expectations and effectively bring innovative products and solutions to the problems they face. As South East Water continues to build a new relationship between the community and water, this relationship demands new ways of managing the water supply. Shaun will examine some of the issues and opportunities on the transformation necessary within the water metering sector in managing the water supply.



PETER ALBERTS

Manager Retail Markets, VENCORP

"A New Regulatory Regime for Gas - Law, Rules and Procedures"

A presentation on the structure and impact of the new regulatory regime that will govern the gas markets in Queensland, New South Wales, ACT, Victoria and South Australia. The presentation will outline how the National Gas Law, the National Gas Rules and the AEMO Procedures will operate as an integrated regulatory package, and what changes will occur to existing arrangements.

SPONSORS

GOLD



SILVER



BRONZE



SPEAKER EVALUATION PRIZE SPONSOR



CONFERENCE PROGRAM

MONDAY 25 MAY, 2009

12.30 PM REGISTRATION DESK OPENS

2.00-5.00 PM WORKSHOP : DEVELOPMENTS IN MEASUREMENT STANDARDS AND LEGISLATION FOR UTILITY METERS IN AUSTRALIA

This workshop will cover recent developments in measurement standards and legislation for electricity, water and gas meters. Topics such as the recent Amendment to the National Measurement Act, pattern approval and verification requirements, the international harmonisation of electricity meter standards and the development and implementation of national water meter standards will be addressed by a panel of representatives from industry and regulatory authorities. There will also be substantial time allowed for questions and discussion.

3.00 – 3.30 PM AFTERNOON TEA (WORKSHOP DELEGATES ONLY)

5.30 – 7.30 PM OFFICIAL EXHIBITION OPENING AND COCKTAIL PARTY

The Welcome Reception will be held in the Exhibition area at the Crown Promenade Hotel and is the first official function of the Conference where all the Delegates, Sponsors, Exhibitors and invited guests are together.

Sponsored by 

TUESDAY 26 MAY, 2009

8.00 AM REGISTRATION DESK OPENS

8.30 AM EXHIBITION AREA OPENS

8.30 – 10.30 AM OPENING PLENARY

ALL DELEGATES

Conference Chair : Michael Zammit

Presenters on the Opening Plenary are:

- Rick Stevens Director, Strategy Development, Hydro One, *Hydro One Smart Meter / Smart Grid Project*
- Shaun Cox Managing Director, South East Water Limited, *Climate of Change*
- Peter Alberts Manager Retail Markets, VENCORP, *A New Regulatory Regime for Gas - Law, Rules and Procedures*

10.30 – 11.00 AM MORNING TEA – EXHIBITION AREA

INTELLIGENT GRID

- Geoff Williamson VP Commercial Business Development, Trilliant (USA), *The Smart Grid Goes Mainstream: Challenges & Opportunities*
- Chris Dunstan, Research Principal, Institute of Sustainable Futures, *Making Connections: Intelligent Grid, Distributed Energy and Climate Change*
- Dr Julian Elder Chief Executive, Wel Networks (NZ), *Advanced Metering – A NZ Electricity Distributor's Perspective*

WATER AMI

- Roland Hofman Regional Manager, Hydrometer GmbH (Germany), *New Metering Technologies Combined with State-of-the-art AMR – A Holistic Approach for Australia*
- Peter Guttmann Senior Policy Analyst, Dept of Sustainability & Environment, *The Case for Establishing Smart Water Meter Benefits and Costs*
- Ross Ahrens Coordinator Business Support for the CEO, Gold Coast Water, *Implementation of Sub Metering AMR on the Gold Coast*

12.30 - 2.00 PM LUNCH

SPONSORED BY



2.00 – 3.30 PM SESSIONS

ADVANCED METERING / COMMUNICATIONS

- Richard Newell Managing Director, Itron Australasia, *AMI Security*
- Ray Bell CEO, GridNet (USA), *4G Wireless Telecoms: Foundation of the Smart Energy Grid Transformation*
- Richard Webbe Country Manager (Aus), Silver Springs Networks, *Tomorrow's Energy Efficient Grid Today*

DATA MANAGEMENT

- Debra Henderson BDE, OSIsoft (USA), *Architecting Data Management for the Future*
- Jeff Huysmans Manager - Sales & Marketing & Tim Pike, Metering Systems Manager, EDMI, *Performance and Optimisation of P2P AMI Systems*
- Mal Collins Associate Partner, IBM Australia, *Does an Intelligent Grid Mean an Intelligent Business?*

POLICY AND STANDARDS

- Roy Kaplan Manager Metrology Regulation, NEMMCO, *The National Electricity Market Metrology Developments*
- David Sheppard Metering Systems Manager, Metering Dynamics, *Metering Today's Customer Loads*
- TBA

3.30 – 4.00 PM AFTERNOON TEA - EXHIBITION AREA

4.00 – 5.30 PM SESSIONS

AMI TRIALS AND TECHNOLOGIES

- **Stephen Lette** Manager Metering Information, Integral Energy *Integral's Metering and Pricing Trials - Technology Trials and Customer Responses*
- **Oliver Beaujard** Group VP BD, Wavecom S.A., *The Ideal Wireless Solution for Automatic Metering Reading Systems*
- **Andrew Gillespie** Manager Meter Strategy & **Neil McNamee** Ergon Energy, *Enabling Choice – How Can Technology Motivate Consumers*

ADVANCED WATER METERING

- **David Brooke-Smith** Actaris, *Everblu*
- **Guenter Hauber-Davidson** MD, Water Conservation Group, *101 of Smart Metering - Easier and Harder Than You Think*
- **Michael McAulay** Asset Strategy & Performance Advisor, SunWater, *SunWater Past, Present and Future Metering*

AMI IMPLEMENTATIONS

- **Harry Koller** Executive Director, PWC, *National Smart Metering Program – Status Update*
- **Stephen Thomson** Principal Consultant, Marchmont Hill, *Victorian AMI Program*
- **Nigel Barbour** GM Electricity (NZ), Powerco (NZ), *AMI Kiwi Style*

6.00 PM

EXHIBITION AREA CLOSSES

7.15 PM – 8.00 PM

PRE DINNER DRINKS – RIVER ROOM, CROWN ENTERTAINMENT COMPLEX

8.00 PM – 11.15 PM

CONFERENCE DINNER – RIVER ROOM, CROWN ENTERTAINMENT COMPLEX

SPONSORED BY



manage energy better

WEDNESDAY 27 MAY, 2009

8.00 AM

REGISTRATION DESK OPENS

8.30 AM

EXHIBITION AREA OPENS

9.00AM – 10.30AM

SESSIONS BEGIN

REGULATIONS PANEL SESSION

Session Chairs: Rob Colson Landis + Gyr and **David Cornelius** David Cornelius Consulting
This panel session will discuss regulations and how regulatory outcomes affect customers.
Panel Members include:

- Steve Edwell** Chairman, Australian Energy Regulator
- Michael Peevey** President, California Public Utilities Commission
- Bruce Foster** Senior Vice President, Southern California Edison
- Hugh Gleeson** Chief Executive Officer, United Energy Distribution and Multinet Gas
- Jane Castle** Senior Campaigner, Total Environment Centre
- Gavin Duffy** Manager Policy & Research, St Vincent de Paul Society Victoria

10.30 – 11.00 AM

MORNING TEA – EXHIBITION AREA

11.00 – 12.30 PM

SESSIONS

SMART HOMES

- **Jorg Hilderbrand** Business Leader ECC, Honeywell, *Demand Management – In-Home Display*
- **Phil Perry** Director, Impaq Consulting, *HANs, A Key Enabler for Delivering Value with Smart Metering Rollouts*
- TBA

12.30 - 2.00 PM

LUNCH

2.00 – 3.30 PM

SESSIONS

DEMAND MANAGEMENT

- **Burkhard Beyer** BDM, EFR (Germany) *Radio Ripple Control*
- **Trent Schroeter** Product & Engineering Manager, Saab Security, *The Future of Demand Management*
- **Nick Lonie** B.D. Director, Onzo (UK), *Building More Effective Demand Reduction Strategies Through Better User Testing*

3.30 – 4.30 PM

OFFICIAL CONFERENCE CLOSE AND PRIZE DRAWS

This casual reception will be an informal way to reflect on what you've learned and who you have met at MMI 2009 Conference. Bring a fitting end to your conference experience by relaxing with friends – old and new – at the closing Reception. Enjoy complimentary beverages while discussing events with your fellow attendees. Conference Prizes and give-aways will be drawn at this time and it is recommended for attendees to be on-site.

SPEAKER EVALUATION PRIZE

All registered conference attendees that complete a speaker evaluation form are eligible to go into a draw for a prize.

WATER METERING TECHNOLOGY DEMONSTRATIONS

This panel session is a hands-on technology session. Technology suppliers will demonstrate devices and systems, and answer your questions on the fly. Participating companies include:

- Enermet ○ ETM Pacific
- Itron Australasia ○ Utiligy
- Outpost Central

ASSET MANAGEMENT

- **Geraldine Campbell** Metering Contracts Manager, South East Water, *Electricity and Water Quality*
- **Robert Martin & Alex Gajic** Directors, BA Technologies, *Why Are We Using 20mm and Not 15mm Water Meters?*
- **Sharon Adams** South East Water, *Water Meter Protection*

WATER APPLICATIONS

- **Chris Buck** Westernport Water, *Spatial Integration of Technologies Improves Asset Management*
- **Thibaut Caplain** Solutions Manager & Patrick Mioche, BCS Group (NZ), *Wireless Meter Reading Made Easy and Affordable*
- **Andy Ng** Process Control Engineer, "us" - Utility Services, *Multi-Utility Software System*

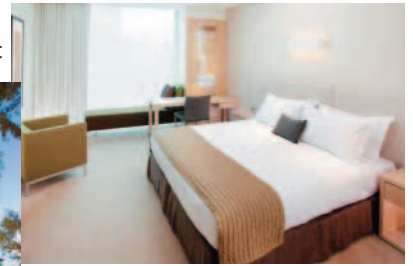
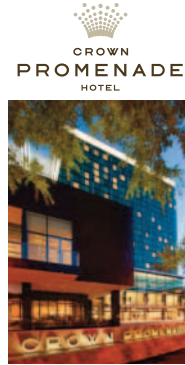
Sponsored by



ACCOMMODATION

CROWN PROMENADE HOTEL

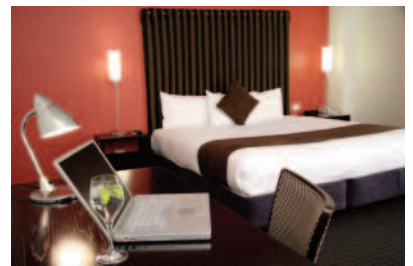
Crown Promenade Hotel is located in Melbourne's vibrant Southbank precinct. Stylish modern and affordable Crown Promenade offers contemporary style accommodation featuring natural light, earthy tones, wood and stone finishes with city or bay views. Crown Promenade features 465 spacious guest rooms including 132 twin rooms (queen) 296 king rooms, 18 studios and 3 luxury suites. All guest rooms feature 24 hour room service, individually controlled air conditioning and central heating, large work desk with high speed internet data points, IDD Telephone, coffee & tea making facilities and daily city shuttle service. Non smoking rooms and floors are available as well as inter-connecting and special facility rooms. Guest Check-in time is 2.00 pm



RENDEZVOUS HOTEL

(10 min. walk to Crown Promenade)

Rendezvous Hotel Melbourne is one of the grand hotels still remaining in Australia. Built in 1913 as the Commercial Travellers Club, this 4.5 star heritage listed hotel has been meticulously restored to retain the feel and style of the classical 1900's era. All guest rooms have access to broadband, 24 hour room service and tea & coffee making facilities. The hotel has a business centre available for guests. Guest check-in time is 2pm.



CONFERENCE DINNER

RIVER ROOM, CROWN ENTERTAINMENT COMPLEX

Boasting magnificent views of the city skyline, overlooking the Yarra River. The River Rooms other distinctive features include, high ceilings, private balcony floor to ceiling windows and an abundance of natural light. The evening will be further enhanced with Live Entertainment, Guest Dinner Speaker, five star cuisine and the opportunity to network with peers from the industry.

Additional dinner tickets can be purchased for colleagues and guests.

The MMI 2009 Conference dinner is proudly sponsored by



manage energy better



MMI SPEAKER EVALUATION PRIZE

Upon completing the speaker evaluation form attendees will go into the draw for a prize that has been sponsored by



DRESS CODE

Smart Casual attire is appropriate for the conference sessions and cocktail party. The Conference Dinner is business suit for men and smart wear for women.

MMI 2009 CONFERENCE COMMITTEE:

- Mike Buseti – South East Water
- Rob Colson – Landis + Gyr
- David Cornelius – David Cornelius Consulting
- Chris Dunstan – University of Technology Sydney
- Peter Georgiadis – Jemena
- Michael Guy – PRI Australasia
- Andrew Meehan – Utiligy
- Richard Newell – Itron Australasia
- Michael Zammit – Conference Chairman

CONFERENCE ORGANISERS:

Integrated Management Services Pty Ltd
Contact: Deanna Zammit, Event Manager
Tel: + (61) 8643 5952
Fax: + (61) 3 8643 5959
Mobile: + (61) 0418 551 630
E-mail: imsevent@bigpond.net.au
Level 1, 250 Queen St, Melbourne Vic 3000
Postal: PO Box 844, Moonee Ponds Vic 3039
ABN 73 051 433 446

REGISTRATION

REGISTRATION FORM: FAX NOW to + 61 (03) 8643 5959
PLEASE COPY THIS REGISTRATION AND SEND ONE COPY PER DELEGATE

NAME	POSITION	
COMPANY		
ADDRESS		
SUBURB	STATE	POSTCODE
PHONE	MOBILE	
FAX	EMAIL	
SPECIAL REQUIREMENTS (EG: WHEELCHAIR ACCESS/VEGETARIAN):		

EVENT REGISTRATION FEES

Please choose the options in sections A, B and C below and fax your registration to IMS on +61 (03) 9326 1503. An invoice for the total amount will be forwarded to you. For enquiries contact IMS on telephone +61 (03) 8643 5952 or email imsevent@bigpond.net.au.

SECTION A: FORUM REGISTRATION Prices in Australian Dollars and includes 10% GST

Events	Early Bird Discount (up to 30 April, 2009)	Full Registration (From 1 May, 2009 onwards)	Activity Selected
Monday: Workshop 1 1.30 pm to 5.00 pm (tea and coffee on arrival and at the afternoon break)	\$340.00	\$410.00	\$
Conference Day Pass Registration includes: Sessions for one day with lunch. Please circle Tues or Wed	\$840.00	\$910.00	\$
Full Registration includes: Exhibition Opening & Cocktail Party, All Sessions Tuesday and Wednesday plus Conference Dinner. (Group bookings less 5% discount)*	\$1,550.00	\$1,850.00	\$
Save \$300 to 30 April 2009			
REGISTRATION FOR ONE MMI WORKSHOP PLUS FULL CONFERENCE REGISTRATION (LESS DISCOUNT) (Group bookings less 5% discount)*	\$1,840.00	\$2,200.00	
Save \$360 to 30 April 2009			
Speaker Registration (Monday workshop not included) Registration includes all Sessions Tuesday and Wednesday plus Exhibition Opening, Cocktail Party, Conference Dinner & Bus Transfers for the Conference Dinner.	\$1,200.00	\$1,200.00	\$
Are you attending the Exhibition Opening (Monday Evening) 5.30 –7.30 pm Beverages, Catering and Entertainment Incl	Registered attendees to confirm for catering purposes		Yes/No
Are you attending the Conference Dinner?	Registered attendees to confirm for catering purposes		Yes/No
Additional tickets for the Cocktail Party – per person	\$80.00	\$90.00	\$
Additional Tickets for the Conference Dinner – per person	\$150.00	\$170.00	\$

SECTION B: ACCOMODATION

Accommodation required

(Pay the hotel separately from your conference registration and at check-out time. Any reservations made that are a no show will incur one night's stay and will be invoiced to the company)

PLEASE ADVISE:

Your Check In Date: _____ /05/09
Your Check Out Date: _____ /05/09

Tick your choices:

- Crown Promenade Hotel**
- Smoking Non Smoking
- Standard King Room \$260.00 per night
- Standard King Room with breakfast per person \$280.00 per night
- Studio Room \$400.00 per night
- Studio Room with breakfast per one person \$420.00 per night
- Rendezvous Hotel**
- Commerce rooms with breakfast for one person per night \$219.00
- Deluxe Rooms with breakfast for one person per night \$189.00

Type of Room: Single Occupancy Double Occupancy
 Twin Share Accommodation

Please book early so as to avoid disappointment.
All bookings must be made through IMS in order to secure the advertised charge rates.

*Group bookings conditions apply

SECTION C : REGISTRATION PAYMENT

A tax invoice will be provided for the total amount and forwarded to you. Payments should be made payable to "Integrated Management Services" and the full amount must be received before the event.

- YES please invoice me - indicate Purchase Order Number: _____
- Alternatively for Payment with Credit Cards (only the following cards accepted):

Circle your choices: **MasterCard** **Visa** Expiry Date _____ / _____

Card Number

Cardholder's name (please print)

Signature

CANCELLATION POLICY Any cancellation 60 days prior the event is subject to a \$100 service charge. Cancellations within 30 days will incur cancellation charge of 50% of the total fee (including accommodation where applicable). Cancellations (including no shows) received within 10 working days of the event will incur the total fees. Substitutes are welcome and their details should be faxed to Integrated Management Services on +61 (03) 9326 1503 prior to the event.

Terms and Conditions The delegate acknowledges having been given a copy of the Terms and Conditions of entry and participation laid down by the venue and further indemnifies the event organiser from any claims, demands, suits or actions resulting from inappropriate conduct, material damage or theft that would otherwise lead to any claim being made against the event organiser.



MMI CONFERENCE

Measurements & Metering Innovation

“METERING FOR A RESOURCE CONSTRAINED WORLD”



EXHIBITORS

